

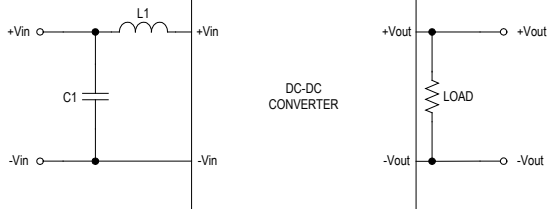


**MINMAX<sup>®</sup>**

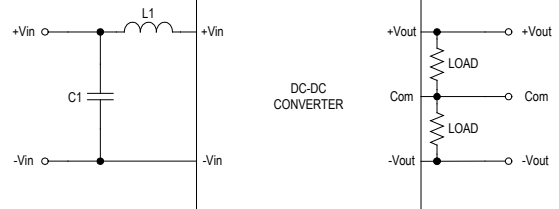
MSHU100 Series - EMC Notes

# MSHU100 Series - EMC Notes

## External Filter meets Conducted & Radiated EMI EN 55011 & EN 55022, class A



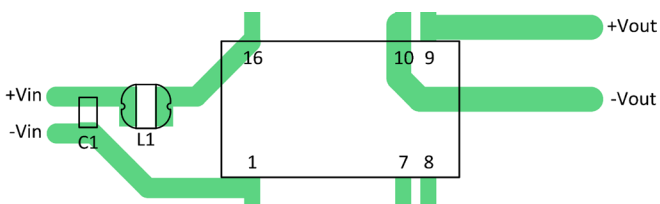
Single Output



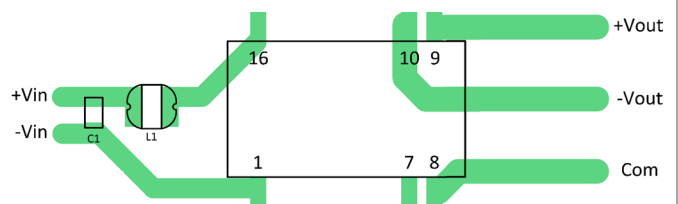
Dual Output

Model	C1	L1
MSHU100 Series	2.2 $\mu$ F/50V 1206 X7R MLCC	88 $\mu$ H SCD0403T-880

## Recommended PCB Layout with Input Filter



Single Output



Dual Output